

Kids'
Safety Notes
9111

HALLOWEEN SAFETY



This “Kids’ Safety Note” is a publication of the
Nassau County Police Department.

For further information, call the
Nassau County Police Department
Public Information Office
at 516-573-7135.

Halloween can be a lot of fun. Your Nassau
County Police Department wants you to
stay safe. Enjoy this puzzle booklet while
you learn all about Halloween safety!

ACTIVITY BOOK

Suggested for
Grades 3 through 6

LAURA CURRAN
COUNTY EXECUTIVE



PATRICK J. RYDER
COMMISSIONER



SAFETY WORD SEARCH:

Read the safety tips below and each time you see an **ORANGE** word, try to find it in the puzzle! (Words can be found left to right, right to left, upside down or diagonally.) Answer on page 5.

V	S	X	H	F	G	Z	E	S	L	I	S	T	C	P
H	B	R	I	Z	P	A	R	N	N	P	T	N	A	U
K	C	B	O	K	Z	E	D	F	G	S	O	A	R	O
T	M	T	T	T	G	P	O	R	C	H	P	T	E	R
M	A	V	A	N	C	R	P	T	R	F	D	S	F	G
J	S	P	A	W	M	E	H	X	V	L	R	I	U	R
J	K	R	E	A	F	G	L	T	A	G	O	S	L	A
U	T	B	T	A	I	R	C	F	Y	B	P	E	T	W
S	R	I	K	L	U	W	E	E	E	G	R	R	U	I
S	O	E	C	A	H	X	R	P	U	R	O	I	U	S
N	T	H	G	I	L	H	S	A	L	F	L	Y	H	V
C	O	S	T	U	M	E	J	O	P	J	L	O	R	U
K	C	A	N	S	U	Q	J	O	I	P	E	S	G	O
H	U	H	F	L	H	F	F	L	Q	S	E	J	P	Y
P	N	E	H	N	Z	B	A	M	B	M	G	D	O	P

SAFETY TIPS

Getting Ready

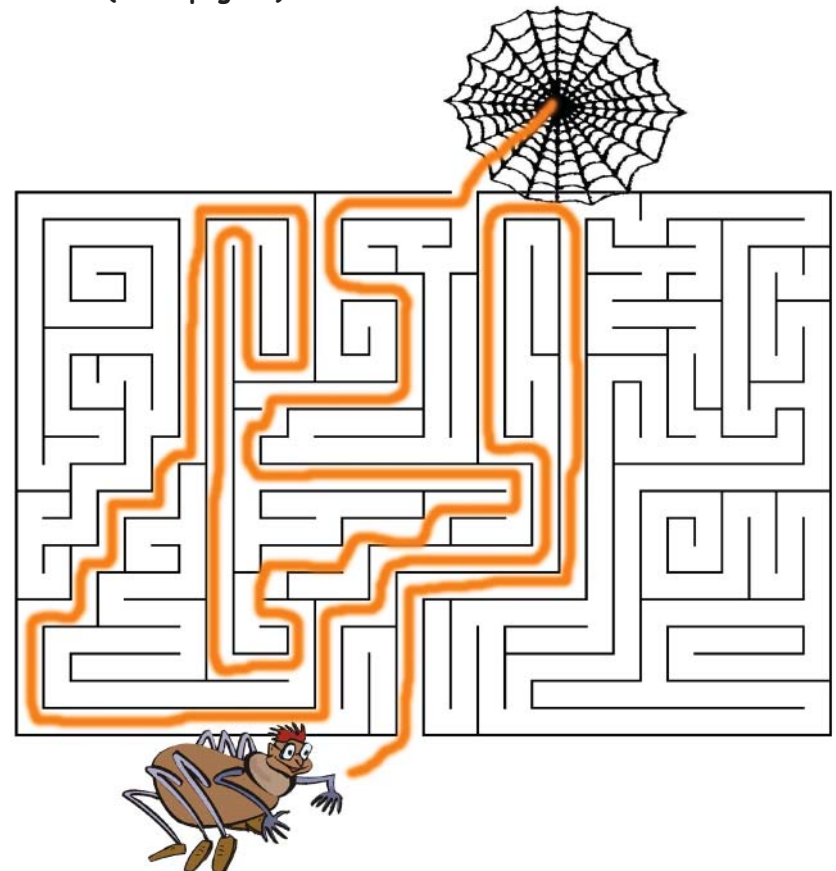
- › Pick a **COSTUME** that is bright and reflective. Make sure that it is flame **RESISTANT**. Keep it short so that you do not trip.
- › Wear **SHOES** that fit well and feel comfortable, even if they do not match your costume.
- › Put reflective **TAPE** on your costume and trick-or-treat bag (or use a white trick-or-treat bag).
- › Wear a **MASK** that you can see through easily. Instead, wear face paint or a hat.
- › If you are going to use a **FAKE** gun or sword, make sure that it looks fake and is soft and flexible.
- › Put your **INFORMATION**: name, address and phone number on the inside of your costume or on a bracelet.

WORD SCRAMBLE (from page 4):

ARYSC
 NYUNF
 OWNNEOLHAL
 CIHTW
 NILBOG
 ONOM
 MECRAS
 NIPPKUM
 RATTE
 OOLLBRED

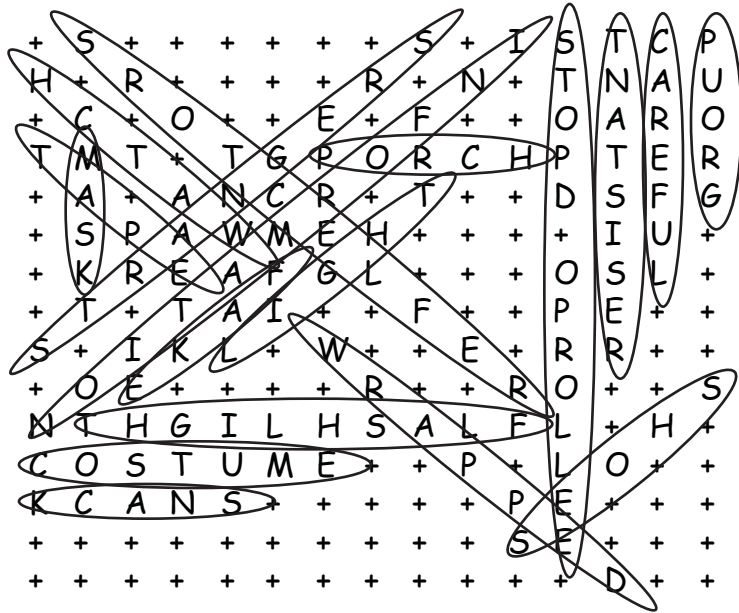
SCARY
FUNNY
HALLOWEEN
WITCH
GOBLIN
MOON
SCREAM
PUMPKIN
TREAT
DOORBELL

MAZE (from page 4):

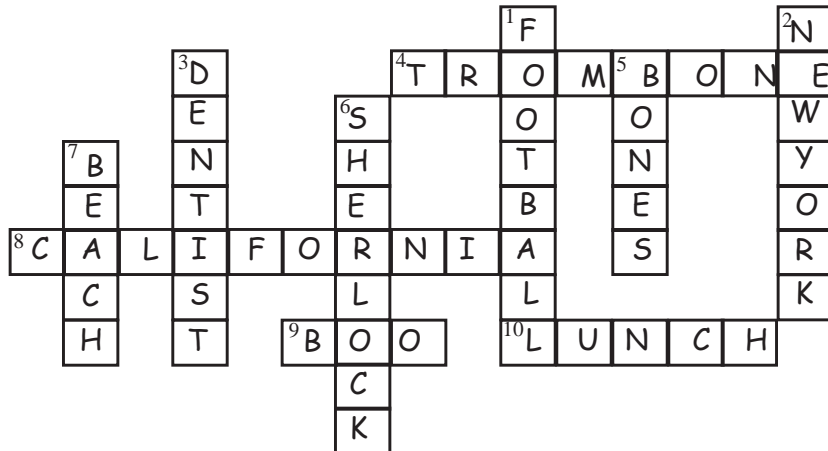


ANSWERS TO PUZZLES:

WORD SEARCH (from page 1):



CROSSWORD (from page 3):



Just Before Going Out

- › Have a drink and eat a **SNACK**. Eat ONLY store **WRAPPED** 'treats'.
- › Put on a **WATCH** that you can read in the dark.
- › Bring a **FLASHLIGHT**. Test the batteries in it.

Out On Halloween

- › If you are not going with your parent or guardian, make sure he or she knows where you are going, who is going with you, and when you are coming back home.
- › Stay with your parent or guardian. If you are with friends, stay in a **GROUP**.
- › It gets dark earlier in the day during Halloween time. Stay on streets that have **LIGHT**.
- › Go to houses with a **PORCH** light on.
- › Obey the traffic rules. Cross at an intersection or at a light. Look both ways before you cross, even if the light is green.
- › If one car stops to let you across, that does not mean that the rest of the cars can see you - be extra **CAREFUL**.
- › Walk slowly. Don't roller-skate, bicycle or skateboard. It is busy that day and it is easier for drivers to see people walking.
- › If there is no sidewalk where you trick or treat, bring along a flashlight and **REFLECTORS** and walk on the left of the street facing traffic. Do not cut across yards or use alleys.

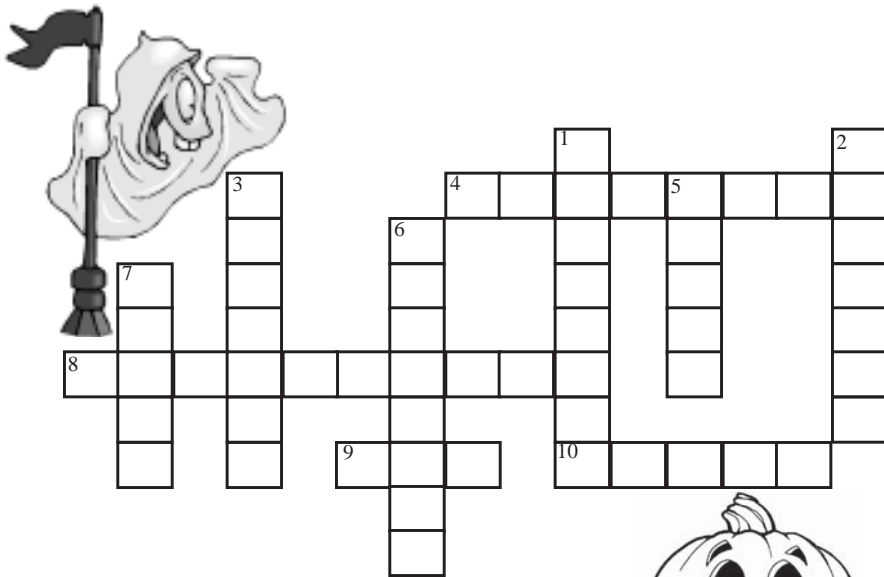
On Halloween And The Rest Of The Year

- › Stay away from parked cars.
- › Stay away from **STRANGERS**.
- › Do not go into a house for treats.
- › Do not pet animals that you do not know.

By the way...

- › Do you know how to "**STOP-DROP-ROLL**" in case your costume catches fire?

SILLY, SPOOKY CROSSWORD (Answer on page 5)



ACROSS

- 4) Skeletons play this musical instrument.
- 8) "Howlywood" movies are made in this state.
- 9) A ghost wears a scary _____ - tie around its neck to a party.
- 10) At noon, the Mummy has _____ in the school "casketeria".

DOWN

- 1) A goblin athlete throws this over the "ghoul" line.
- 2) Dracula visits the " Vampire" State Building in this state.
- 3) Wolfman had a fang-ache and went to the _____.
- 4) The most famous skeleton detective is Sherlock _____.
- 6) The most famous ghost detective is _____ Moans.
- 7) A "sand-witch" goes swimming here in the summer.

HALLOWEEN WORD SCRAMBLE

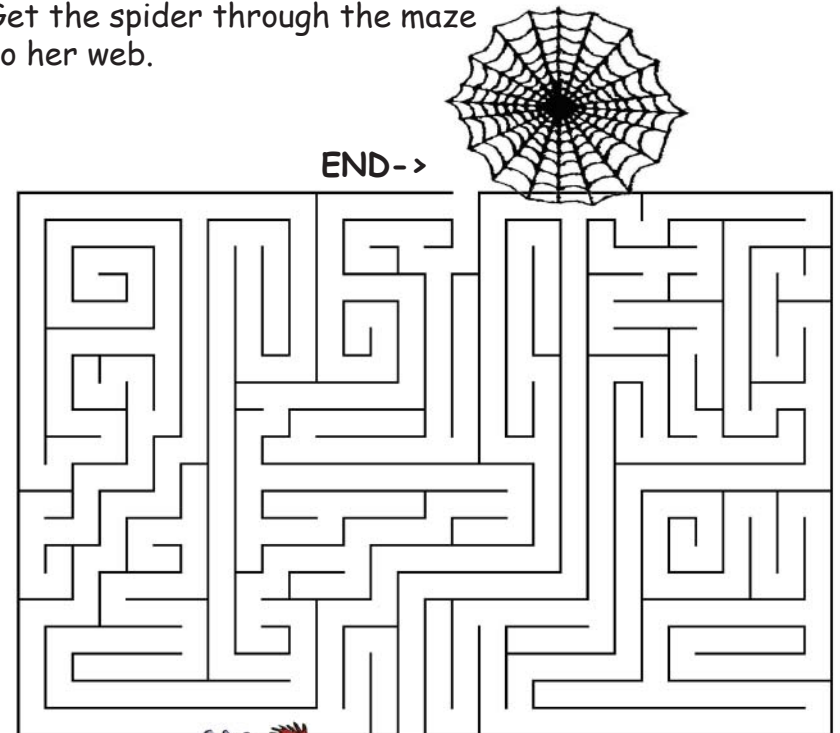
(Answer on page 6)

ARYSC
 NYUNF
 WNEEOLHAL
 CIHTW
 NILBOG
 ONOM
 MECRAS
 NIPPKUM
 RATTE
 OOLLBRED



HALLOWEEN MAZE (Answer on page 6)

Get the spider through the maze to her web.



<-START

Ready to check your answers?
 TURN THE PAGE! ►